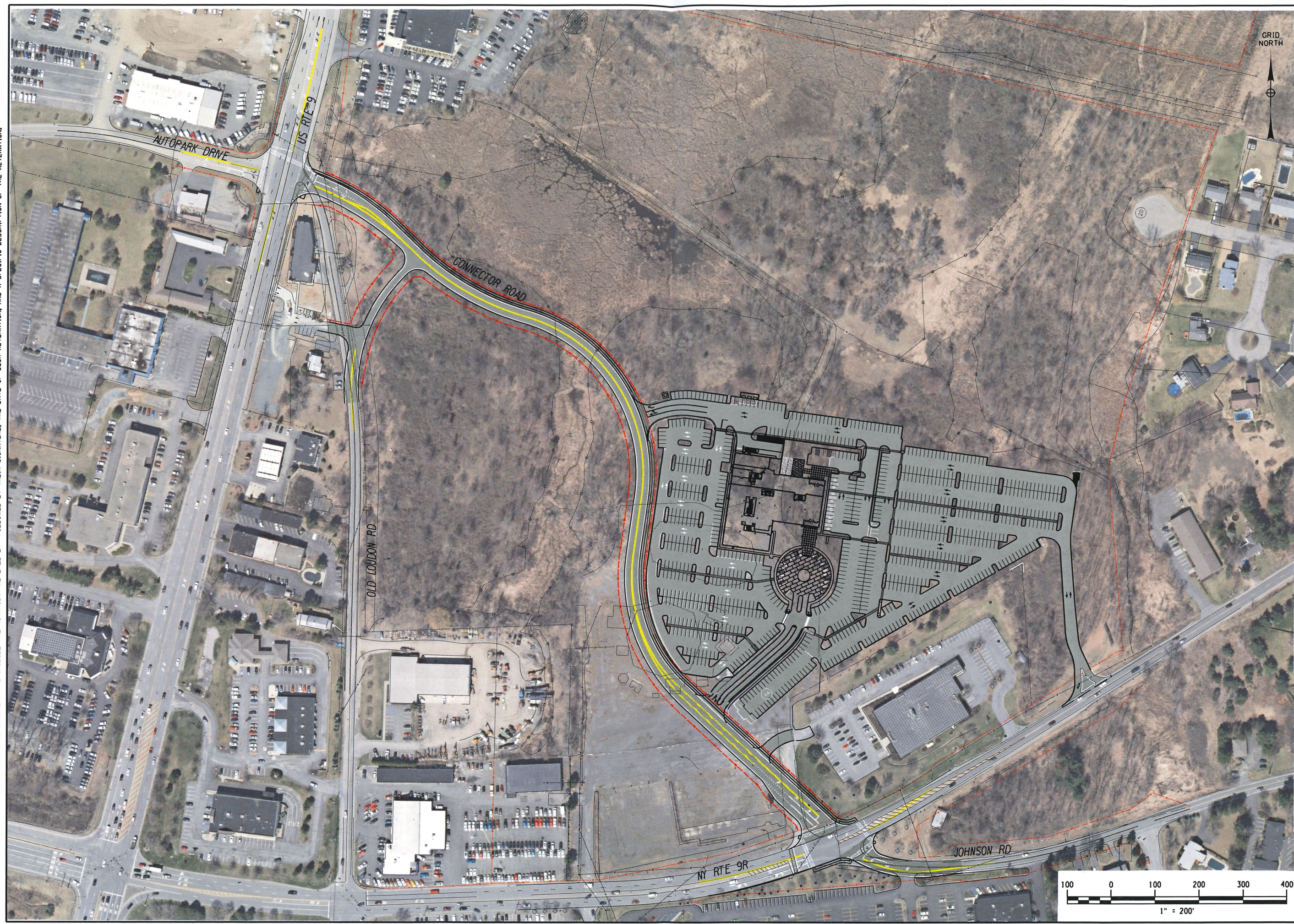


FILE : N:\Projects\2016\116-232 5 Star Lite\acced\gdp\graphics\116-232-cph-pln-01.dgn  
 DATE : 4/4/2018  
 USER : gglabone

IT IS A VIOLATION OF LAW FOR ANY PERSON, UNLESS THEY ARE ACTING UNDER THE DIRECTION OF A LICENSED PROFESSIONAL ENGINEER, ARCHITECT, LANDSCAPE ARCHITECT, OR LAND SURVEYOR, TO ALTER AN ITEM IN ANY WAY, IF AN ITEM BEARING THE STAMP OF A LICENSED PROFESSIONAL IS ALTERED. THE ALTERING ENGINEER, ARCHITECT, LANDSCAPE ARCHITECT, OR LAND SURVEYOR SHALL STAMP THE DOCUMENT AND INCLUDE THE NOTATION "ALTERED BY" FOLLOWED BY THEIR SIGNATURE, THE DATE OF SUCH ALTERATION, AND A SPECIFIC DESCRIPTION OF THE ALTERATION.



NO.	Description	REVISION	DATE	BY
1			mm/dd/yy	XXX

UNAUTHORIZED ALTERATION OR ADDITION TO THIS DOCUMENT IS A VIOLATION OF APPLICABLE STATE AND/OR LOCAL LAWS

**PROGRESS PRINT NOT FOR CONSTRUCTION**



695 Rotterdam Industrial Park  
Schenectady, NY 12306



**Creighton Manning**  
 CREIGHTON MANNING ENGINEERING, LLP  
 2150 WESTERN AVENUE  
 F: (518) 446-6387 E: (518) 446-6387 WWW.CMEELP.COM

DESIGNED: G.G. | DRAWN BY: K.H.D. | CHECKED: S.T.

US ROUTE 9 AND NY ROUTE 9R  
CONNECTOR ROAD  
ALBANY COUNTY, NEW YORK

**OVERALL PLAN**

DATE: APRIL 2018 | CM No.: 116-232 | SCALE: AS NOTED

**PLN-01**  
SHEET NUMBER # of #