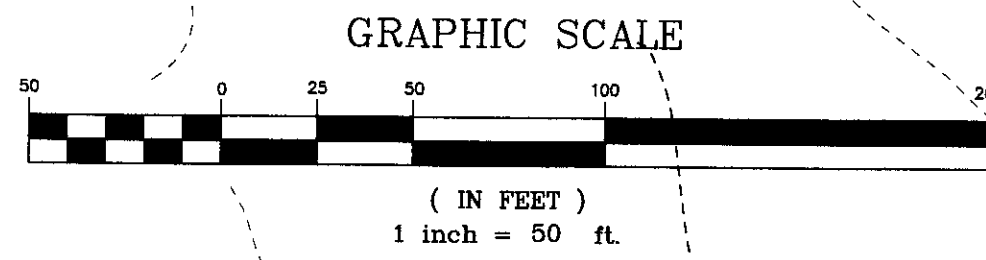
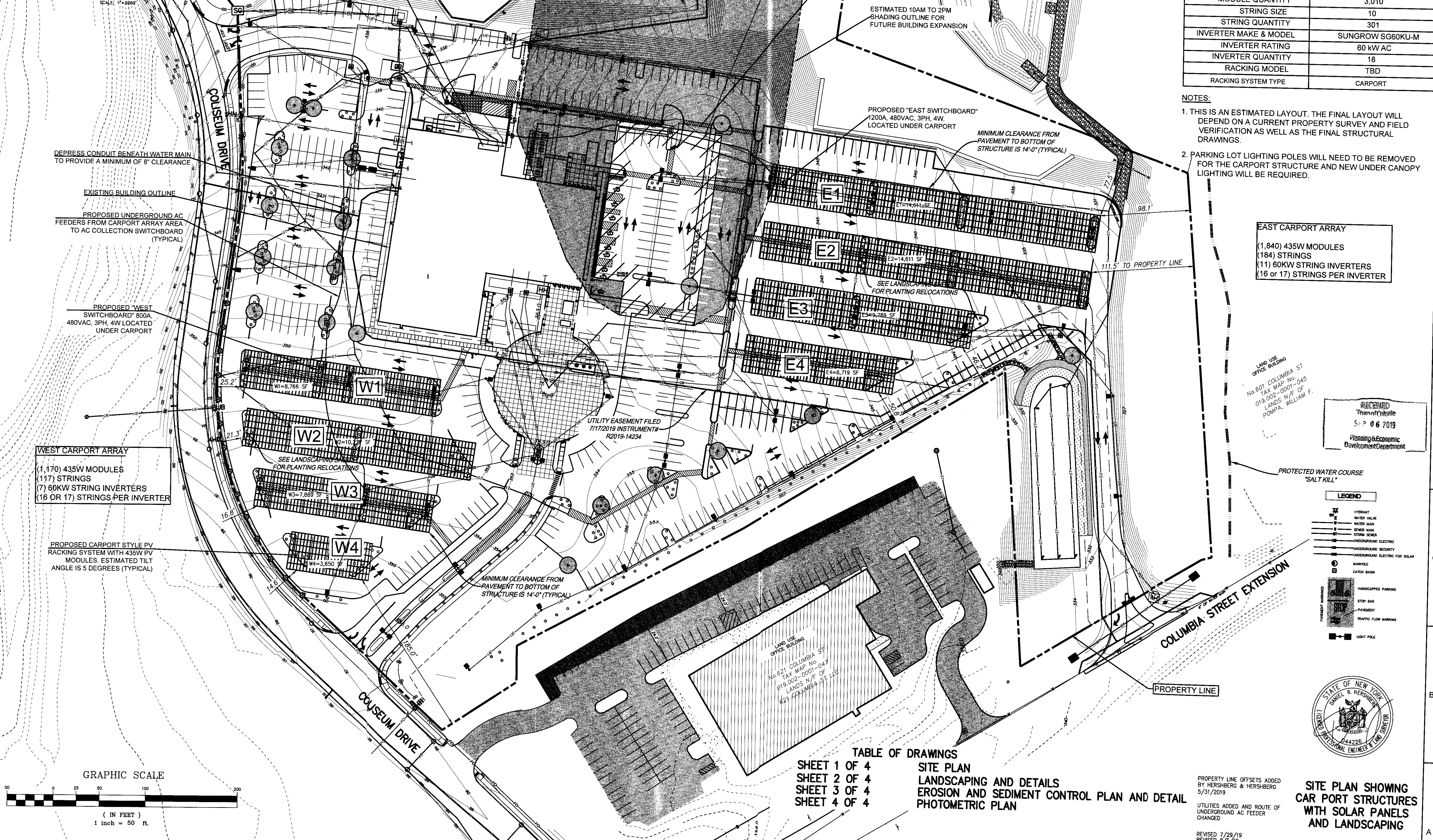


VICINITY MAP
SCALE: 1"=500'



SYSTEM SUMMARY	
DC SYSTEM SIZE	1,309.35 kW DC
AC SYSTEM SIZE	1,140.00 kW AC
AVG. DC/AC RATIO	1.15
TILT ANGLE	5°
SYSTEM AZIMUTH	188°
EQUIPMENT INFORMATION	
MODULE MAKE & MODEL	SUNPOWER SPR-E20-435-COM
MODULE STC RATING	435 W
MODULE QUANTITY	3,010
STRING SIZE	10
STRING QUANTITY	301
INVERTER MAKE & MODEL	SUNGROW SG60KU-M
INVERTER RATING	60 kW AC
INVERTER QUANTITY	18
RACKING MODEL	TBD
RACKING SYSTEM TYPE	CARPORT

NOTES:
 1. THIS IS AN ESTIMATED LAYOUT. THE FINAL LAYOUT WILL DEPEND ON A CURRENT PROPERTY SURVEY AND FIELD VERIFICATION AS WELL AS THE FINAL STRUCTURAL DRAWINGS.
 2. PARKING LOT LIGHTING POLES WILL NEED TO BE REMOVED FOR THE CARPORT STRUCTURE AND NEW UNDER CANOPY LIGHTING WILL BE REQUIRED.

EAST CARPORT ARRAY
 (1,840) 435W MODULES
 (184) STRINGS
 (11) 60KW STRING INVERTERS
 (16 OR 17) STRINGS PER INVERTER

WEST CARPORT ARRAY
 (1,170) 435W MODULES
 (117) STRINGS
 (7) 60KW STRING INVERTERS
 (16 OR 17) STRINGS PER INVERTER

RECEIVED
 Town of Colton
 SEP 06 2019
 Planning & Economic Development Department

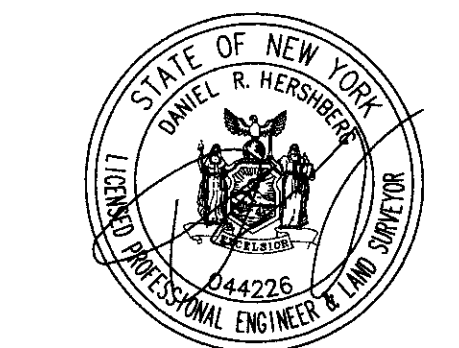
LEGEND

[Symbol]	HYDRANT
[Symbol]	WATER MAIN
[Symbol]	SEWER MAIN
[Symbol]	STORM SEWER
[Symbol]	UNDERGROUND SECURITY
[Symbol]	UNDERGROUND ELECTRIC FOR SOLAR
[Symbol]	HANDHOLES
[Symbol]	CATCH BASIN
[Symbol]	HANDICAPPED PARKING
[Symbol]	STOP BAR
[Symbol]	PAVEMENT
[Symbol]	TRAFFIC FLOW MARKING
[Symbol]	LIGHT POLE

TABLE OF DRAWINGS

SHEET 1 OF 4	SITE PLAN
SHEET 2 OF 4	LANDSCAPING AND DETAILS
SHEET 3 OF 4	EROSION AND SEDIMENT CONTROL PLAN AND DETAIL
SHEET 4 OF 4	PHOTOMETRIC PLAN

PROPERTY LINE OFFSETS ADDED BY HERSHBERG & HERSHBERG 5/31/2019
 UTILITIES ADDED AND ROUTE OF UNDERGROUND AC FEEDER CHANGED
 REVISED 7/29/19
 REVISED 8/5/19
 REVISED 9/4/19



SITE PLAN SHOWING CAR PORT STRUCTURES WITH SOLAR PANELS AND LANDSCAPING

NEXTERA ENERGY
 700 Universe Blvd
 Juno Beach, FL 33408
 561-304-5299

PIKE ELECTRIC, LLC
 11770 U.S. Highway One
 Suite 102E
 Palm Beach Gardens, FL 33408
 336-719-4235

STATE OF NEW YORK
 KEVIN LEARY
 081857
 PRELIMINARY - NOT RELEASED FOR CONSTRUCTION
 CONSULTANT

AVOCA ENGINEERS, LLC
 ARCHITECTS, LLC
 345 OLD WEST BURNING WOOD ROAD PISCATAWAY NJ 08854
 PHONE (732) 466-1052 FAX (732) 466-1005

NO. DATE DESCRIPTION
 0 02/15/19 ISSUED FOR INTERCONNECTION
 1 05/08/19 REVISED PER UPDATED SITE PLAN

PROJECT: 19-80-002

NEXTERA GOLDMAN SACHS
 629 COLUMBIA STREET
 COLONIE, NY 12047

DATE: 02/15/19
 DRAWN BY: EG
 CHECKED BY: KL