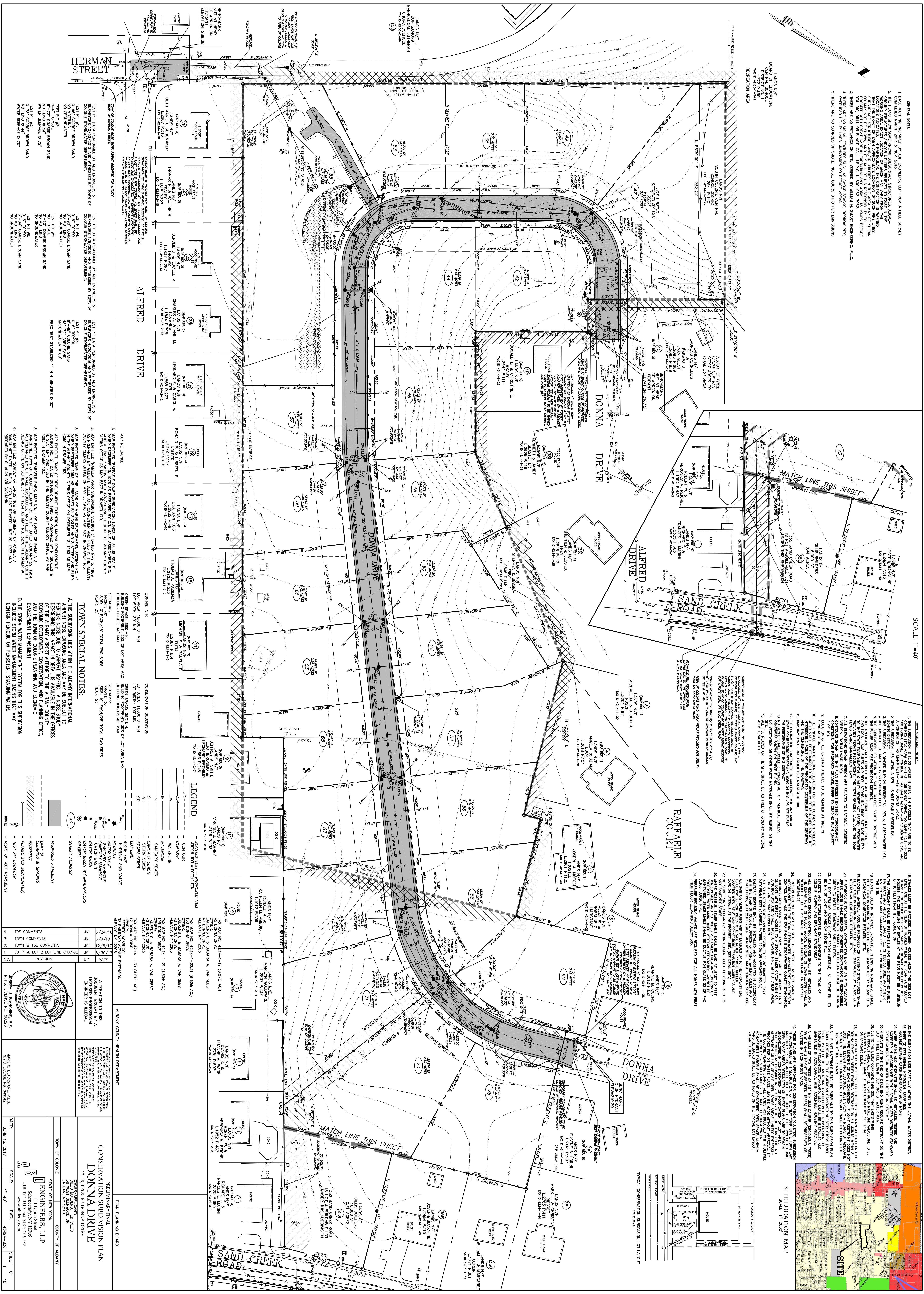


- GENERAL NOTES:**
1. BASE MAPING PREPARED BY ABE ENGINEERS, LLP FROM A FIELD SURVEY.
 2. THE PLANS SHOW SOME KNOWN SUBSURFACE STRUCTURES, ABOVE-GROUND STRUCTURES AND UTILITIES BELIEVED TO EXIST IN THE LOCATIONS INDICATED. IN PARTICULAR, THE CONSTRUCTION OF WATER MAINS AND SANITARY SEWERS IN THE AREA MAY BE SHOWN. THE CONTRACTOR SHALL BE RESPONSIBLE FOR VERIFYING THE LOCATION AND DEPTH OF ALL EXISTING AND PROPOSED UTILITIES BEFORE ANY EXCAVATION OR CONSTRUCTION BEGINS. CONTACT 311 FOR UTILITIES INFORMATION. CONTACT 311 OR 518-537-3437 FOR UTILITY INFORMATION.
 3. THERE ARE NO WEAPONS ON SITE, OWNED BY WILLIAM H. SMART-DEBBARD, PLLC.
 4. OVERHEAD UTILITY LINES, ANTENNAS OR REFLECTOR ASSETS.
 5. THERE ARE NO SOURCES OF SMOKE, NOISE, ODORS OR OTHER EMISSIONS.

SCALE: 1"=40'



TEST PIT #1: APPROVED BY ABE ENGINEERS & WITNESSED BY TOWN OF COLONIE STORMWATER DEPARTMENT.

TEST PIT #2: APPROVED BY ABE ENGINEERS & WITNESSED BY TOWN OF COLONIE STORMWATER DEPARTMENT.

TEST PIT #3: APPROVED BY ABE ENGINEERS & WITNESSED BY TOWN OF COLONIE STORMWATER DEPARTMENT.

TEST PIT #4: APPROVED BY ABE ENGINEERS & WITNESSED BY TOWN OF COLONIE STORMWATER DEPARTMENT.

TEST PIT #5: APPROVED BY ABE ENGINEERS & WITNESSED BY TOWN OF COLONIE STORMWATER DEPARTMENT.

TEST PIT #6: APPROVED BY ABE ENGINEERS & WITNESSED BY TOWN OF COLONIE STORMWATER DEPARTMENT.

TEST PIT #7: APPROVED BY ABE ENGINEERS & WITNESSED BY TOWN OF COLONIE STORMWATER DEPARTMENT.

TEST PIT #8: APPROVED BY ABE ENGINEERS & WITNESSED BY TOWN OF COLONIE STORMWATER DEPARTMENT.

TEST PIT #9: APPROVED BY ABE ENGINEERS & WITNESSED BY TOWN OF COLONIE STORMWATER DEPARTMENT.

TEST PIT #10: APPROVED BY ABE ENGINEERS & WITNESSED BY TOWN OF COLONIE STORMWATER DEPARTMENT.

MAP REFERENCE:

1. LANS N/F, ZONING EXTENSION, MAP NO. 4002, DATED JANUARY 25, 2017.
2. LANS N/F, ZONING EXTENSION, MAP NO. 4002, DATED JANUARY 25, 2017.
3. LANS N/F, ZONING EXTENSION, MAP NO. 4002, DATED JANUARY 25, 2017.
4. LANS N/F, ZONING EXTENSION, MAP NO. 4002, DATED JANUARY 25, 2017.
5. LANS N/F, ZONING EXTENSION, MAP NO. 4002, DATED JANUARY 25, 2017.
6. LANS N/F, ZONING EXTENSION, MAP NO. 4002, DATED JANUARY 25, 2017.

TOWN SPECIAL NOTES:

1. THIS SUBDIVISION LIES WITHIN THE ALBANY INTERMEDIATE AIRPORT NOISE ABATEMENT AREA AND MAY BE SUBJECT TO AIRPORT NOISE ABATEMENT ORDINANCES. THE CONTRACTOR SHALL VERIFY THE LOCATION AND DEPTH OF ALL EXISTING AND PROPOSED UTILITIES BEFORE ANY EXCAVATION OR CONSTRUCTION BEGINS. CONTACT 311 FOR UTILITIES INFORMATION. CONTACT 311 OR 518-537-3437 FOR UTILITY INFORMATION.
2. THERE ARE NO WEAPONS ON SITE, OWNED BY WILLIAM H. SMART-DEBBARD, PLLC.
3. OVERHEAD UTILITY LINES, ANTENNAS OR REFLECTOR ASSETS.
4. THERE ARE NO SOURCES OF SMOKE, NOISE, ODORS OR OTHER EMISSIONS.

LEGEND:

- PROPOSED PARKING
- LOT OF 6.00 ACRES
- PROPOSED DRIVE
- EXISTING DRIVE
- LOT LINE
- W/ATERLINE
- SANITARY SEWER
- LOT LINE
- ROAD AND VALVE
- HYDRANT
- SANITARY MANHOLE
- CATCH BASIN
- CATCH BASIN W/ MANTENANCE
- STREET ADDRESS
- PROPOSED ADDRESS

ALBANY COUNTY HEALTH DEPARTMENT

ADVISORY BOARD

ALBANY COUNTY HEALTH DEPARTMENT

ALBANY COUNTY HEALTH DEPARTMENT

CONSERVATION SUBDIVISION PLAN
DONNA DRIVE

PREPARED BY: ABE ENGINEERS, LLP
17, 45, 100 & 105 DONNA DRIVE
LATHAM, NY 12110

OWNER/DEVELOPER: JAMES J. BANCHE, P.E.
20 WEST GLENWOOD DR.
LATHAM, NY 12110

DATE: JUNE 15, 2017

SCALE: 1"=40'

SHEET: 1 OF 10

MARK C. BLANCHARD, P.E.
NYS LICENSE NO. 04952

TOWN ESTABLISHED LOTS:

1. THE SUBDIVISION LIES WITHIN THE ALBANY INTERMEDIATE AIRPORT NOISE ABATEMENT AREA AND MAY BE SUBJECT TO AIRPORT NOISE ABATEMENT ORDINANCES. THE CONTRACTOR SHALL VERIFY THE LOCATION AND DEPTH OF ALL EXISTING AND PROPOSED UTILITIES BEFORE ANY EXCAVATION OR CONSTRUCTION BEGINS. CONTACT 311 FOR UTILITIES INFORMATION. CONTACT 311 OR 518-537-3437 FOR UTILITY INFORMATION.
2. THERE ARE NO WEAPONS ON SITE, OWNED BY WILLIAM H. SMART-DEBBARD, PLLC.
3. OVERHEAD UTILITY LINES, ANTENNAS OR REFLECTOR ASSETS.
4. THERE ARE NO SOURCES OF SMOKE, NOISE, ODORS OR OTHER EMISSIONS.

SITE LOCATION MAP

SCALE: 1"=2000'