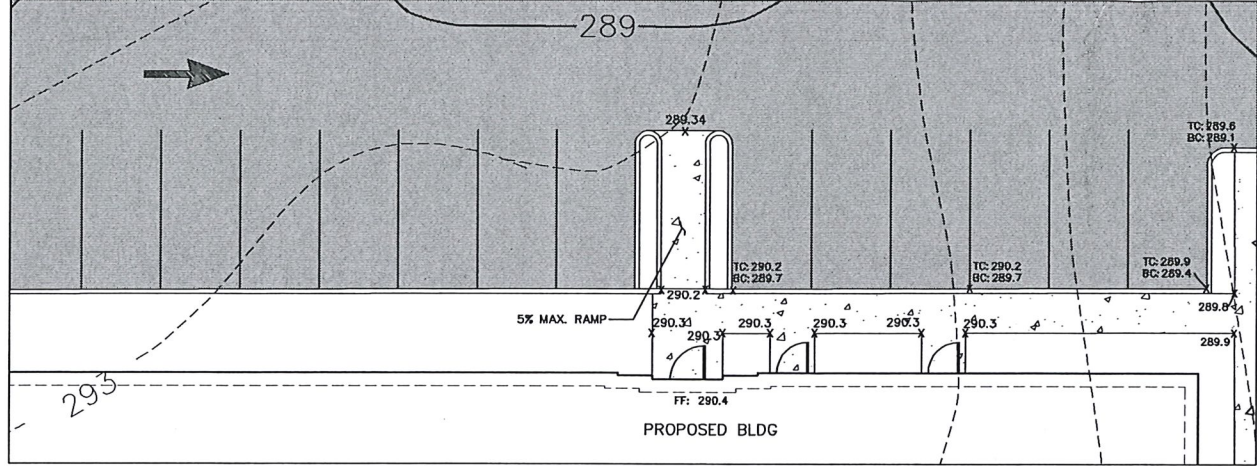
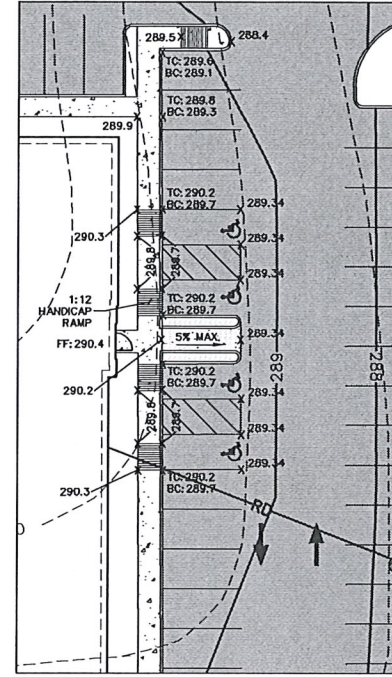


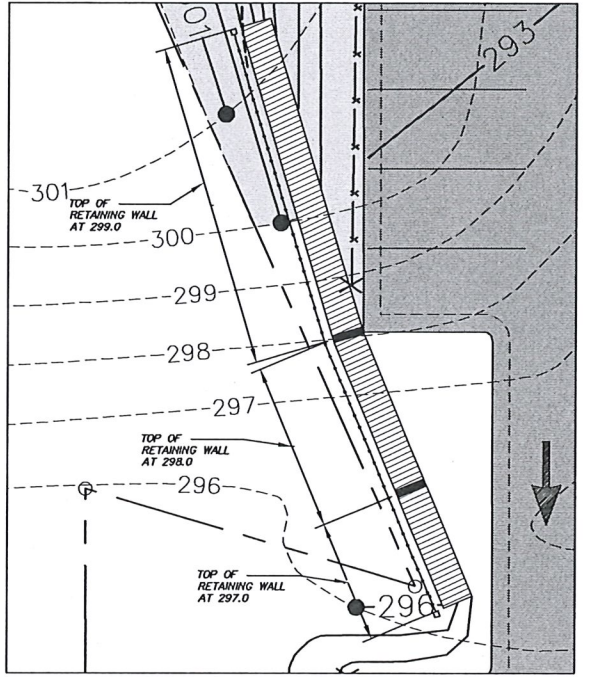
- CONCRETE NOTES:**
1. ALL DOORS SHALL HAVE A MINIMUM 5"X5" CONCRETE PAD, SLOPED AT 1/4" PER FOOT. PAD SHALL MEET BUILDING CODE REQUIREMENTS WITH A FOUNDATION.
 2. ALL HANDICAP RAMPS SHALL BE REVIEWED, WHEN THE FORMS ARE IN PLACE, BY THE ENGINEER PRIOR TO POURING.
 3. A REVIEW OF THE FLAT WORK WITH THE CONTRACTOR, ARCHITECT, AND ENGINEER IS MANDATORY PRIOR TO ANY WORK.
 4. THE ENGINEER SHALL REVIEW ALL FLAT WORK FORMS PRIOR TO POURING OF CONCRETE.
 5. ALL CONC. SIDEWALK TERMINATION POINTS TO PARKING LOT SHALL BE ADA COMPLIANT. (SEE DETAILS).



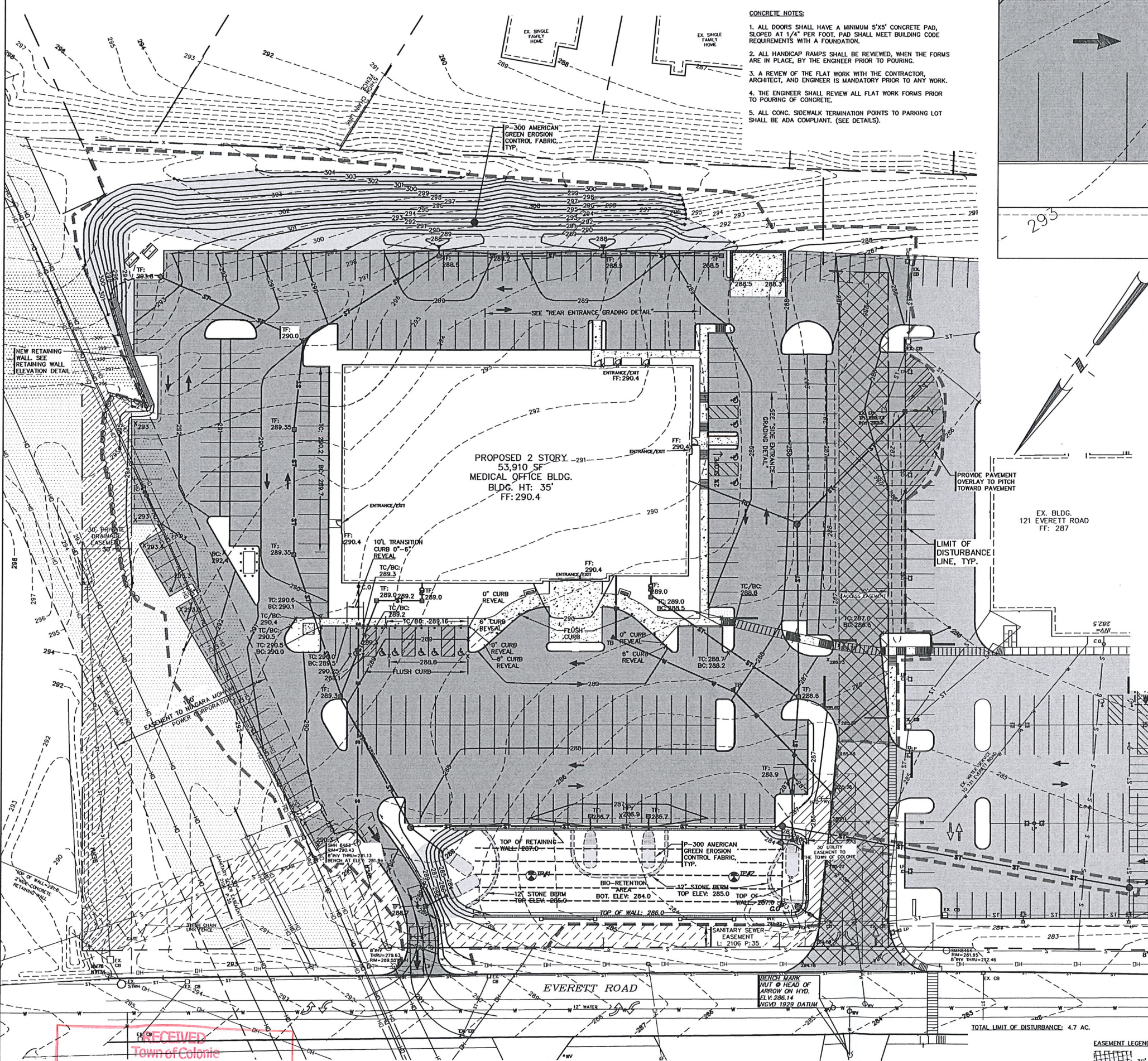
REAR ENTRANCE GRADING DETAIL



SIDE ENTRANCE GRADING DETAIL



RETAINING WALL ELEVATION DETAIL



EX. BLDG.
121 EVERETT ROAD
FF: 287

LIMIT OF DISTURBANCE
LINE, TYP.

TOTAL LIMIT OF DISTURBANCE: 4.7 AC.

- LEGEND:**
- PROPOSED ASPHALT
 - EXISTING ASPHALT
 - PROPOSED SIDEWALK
 - PROPOSED CONC. CURBING
 - PROPOSED ASPHALT WINGEDGE
 - PROPOSED P-300 AMERICAN GREEN EROSION CONTROL FABRIC
 - 30' ACCESS EASEMENT
 - SANITARY EASEMENT
 - 100' NAGRA MOHAWK EASEMENT
 - 30' DRAINAGE EASEMENT

NO.	REVISION	DATE	BY
8	OWNER CHANGES	T.A.G. 4.24.18	
7	ALBANY COUNTY COMMENTS	T.A.G. 4.16.18	
6	TRANSFORMER PAD LAYOUT	T.A.G. 11.21.18	
5	BAL COMMENTS	J.E.H. 5.14.18	
4	LATHAM WATER COMMENTS	J.E.H. 3.27.18	
3	LATHAM WATER COMMENTS	J.E.H. 1.19.18	
2	BAL/TOWN COMMENTS	J.E.H. 12.5.17	
1	PRELIMINARY FINAL PLANS	J.E.H. 10.19.17	



LUIGI A. PALLESCHI, P.E.
N.Y.S. LICENSE NO. 94678

GRADING PLAN
PROPOSED 2 STORY MEDICAL OFFICE
123 EVERETT ROAD

TOWN OF COLONIE COUNTY OF ALBANY
STATE OF NEW YORK

ABD ENGINEERS, LLP
411 Union Street
Schenectady, NY 12305
518-377-0315 Fax 518-377-0379
www.abdeng.com

DATE: AUGUST 4, 2017 SCALE: 1" = 30' DWG. NO. 1838_SIT_C29 SHEET OF 2 10

RECEIVED
Town of Colonie
MAY 13 2019
Planning & Economic
Development Department