

Site Coverage Statistics

Description	Square Feet	Acres	Percentage of Site
BUILDINGS AREA	626,810	14.39	16.1
PAVED AREA	1,793,658	41.18	46.0
GREEN SPACE	1,474,250	33.84	37.9
LOT SIZE	3,894,718	89.41	100

* ALL FIGURES CALCULATED FOR LATHAM FARMS AS A WHOLE, INCLUDING THE PROPOSED RESTAURANTS AND RETAIL.

Parking Summary Chart

Description	Size		Spaces	
	Required	Provided	Required	Provided
STANDARD SPACES	9 x 18	9 x 18	140	140
STANDARD ACCESSIBLE SPACES*	8 x 18	8 x 18	4	4
VAN ACCESSIBLE SPACES**	8 x 18	8 x 18	1	1
TOTAL SPACES			145	145+**

* ADA/STATE/LOCAL REQUIREMENTS
 ** INCLUDES EXCESS STANDARD SPACES FROM PARKING FIELD IN FRONT OF DICK'S SPORTING GOODS / FIELD & STREAM (PER PARKING STUDY)

Parking Requirements:

RESTAURANT A	170 SEATS	x	1 SPACE	/	2 SEATS	=	85 SPACES	
	12 EMP	x	1 SPACE	/	1 EMP	=	12 SPACES	
RESTAURANT B	60 SEATS	x	1 SPACE	/	2 SEATS	=	30 SPACES	
	6 EMP	x	1 SPACE	/	1 EMP	=	6 SPACES	
RETAIL	2,400 SF	x	1 SPACE	/	200 SF	=	12 SPACES	
TOTAL PARKING REQUIRED							=	145 SPACES*
TOTAL PARKING PROVIDED							=	145+ SPACES*

* INCLUDES EXCESS STANDARD SPACES FROM PARKING FIELD IN FRONT OF DICK'S SPORTING GOODS / FIELD & STREAM (PER PARKING STUDY)

Internal Green Space Requirement

ZONING	20 SQUARE FEET PER PARKING STALL
REQUIRED	20 SQUARE FEET x 42 STALLS = 840 SQUARE FEET
PROVIDED	853 SQUARE FEET

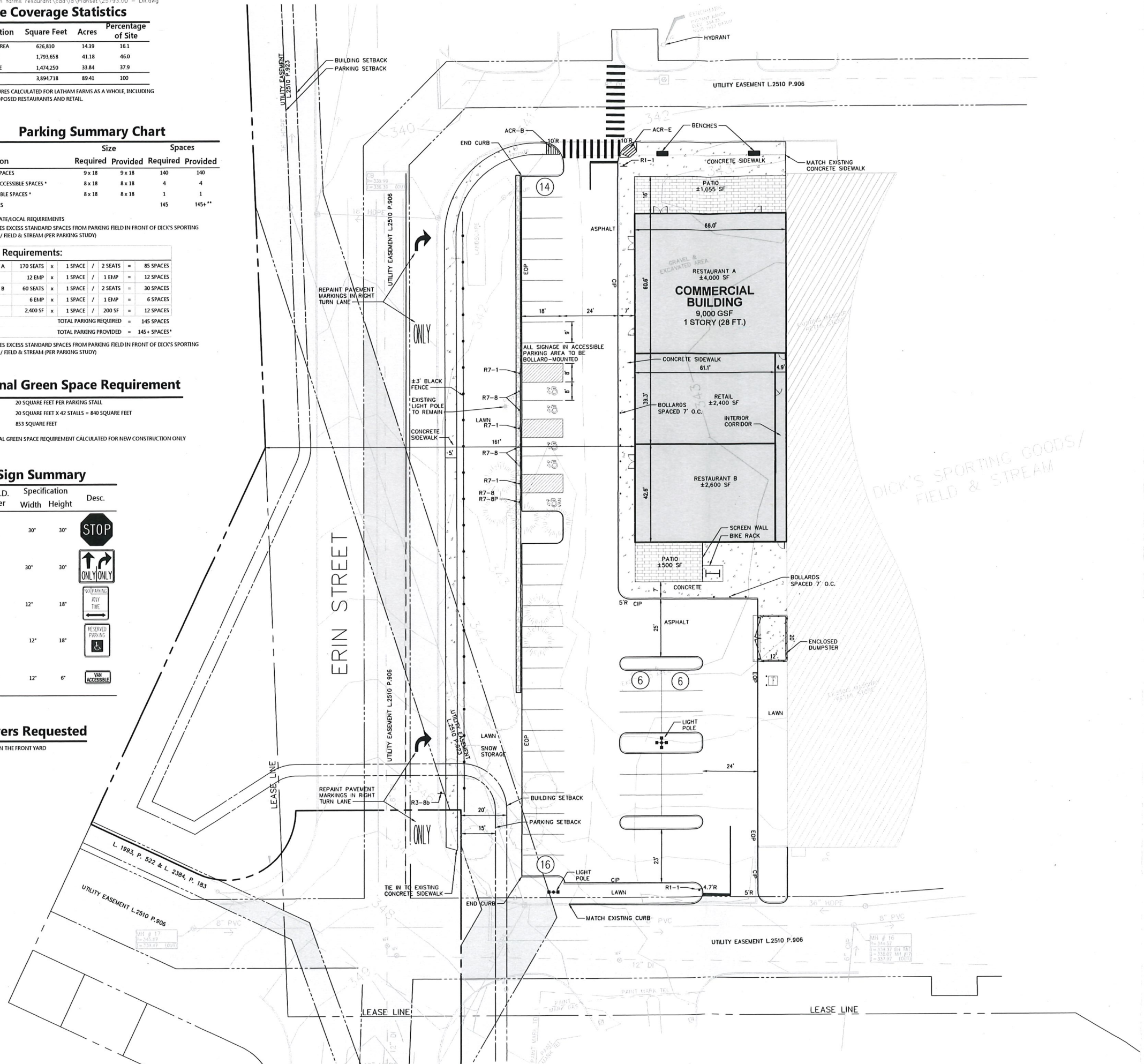
* INTERNAL GREEN SPACE REQUIREMENT CALCULATED FOR NEW CONSTRUCTION ONLY

Sign Summary

M.U.T.C.D. Number	Specification Width	Height	Desc.
R1-1	30"	30"	STOP
R3-8b	30"	30"	ONLY
R7-1	12"	18"	RESERVED FOR TRUCK
R7-8	12"	18"	RESERVED PARKING
R7-8P	12"	6"	VAN ACCESSIBLE

Waivers Requested

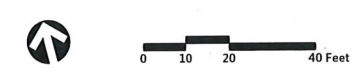
1) PARKING IN THE FRONT YARD



vhb.com
 Engineering, Surveying & Landscape Architecture, PC
 100 Great Oaks Boulevard
 Suite 118
 Albany, NY 12203
 518.389.3600

RECEIVED
 Town of Colonie
 MAR 12 2018
 Planning & Economic Development Department

APPLICANT:
 KIR LATHAM FARMS, L.P.
 3333 NEW HYDE PARK ROAD
 NEW HYDE PARK, NY 11042



Latham Farms
 Restaurants & Retail
 579 Troy Schenectady Road
 Latham, New York 12110

No.	Revision	Date	Appd.
2	Response to FEDD and TDE Comments	Jan 26, 2018	MT
1	Preliminary Final Review	Dec 29, 2017	MT

Designed by: AWK
 Checked by: MBT
 Issued for: Preliminary Review
 Date: January 26, 2018

Not Approved for Construction
 Layout and Materials Plan



C-4

Sheet 4 of 14

Project Number: 25793.00