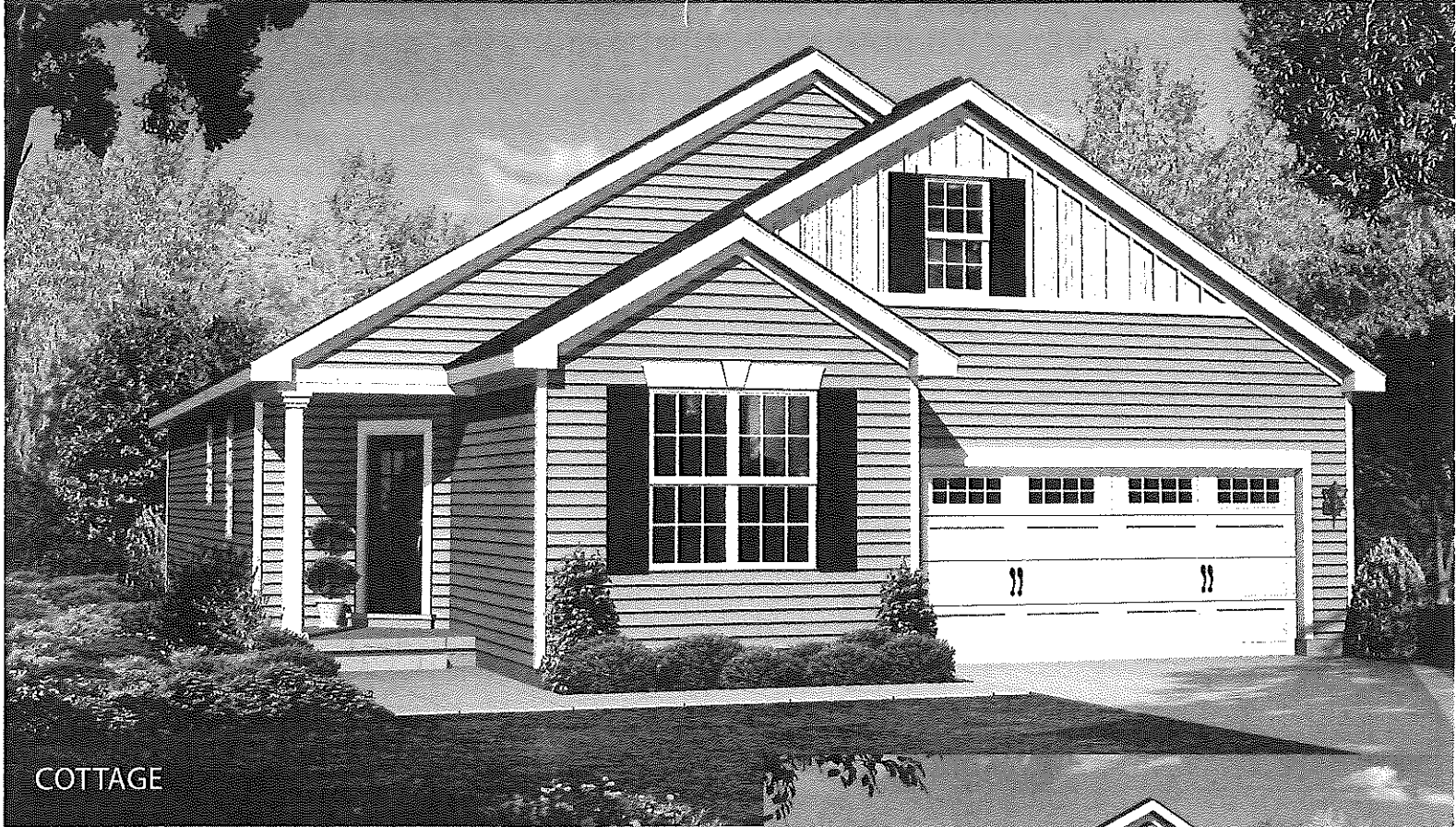
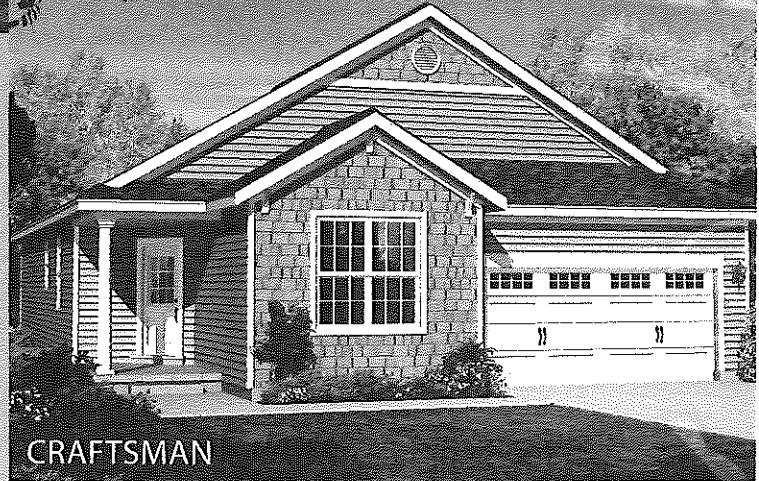


# Greylock II Collection



COTTAGE



CRAFTSMAN

### bonus / flex space options

- Loft • 351 sq. ft.
- Breakfast extension • 94 sq. ft.
- Breakfast bay • 18 sq. ft.
- Screened porch • 94 sq. ft.

Cottage • 1,682 sq. ft.  
Craftsman • 1,682 sq. ft.



# Arcadia Collection



NANTUCKET

Nantucket • 1,891 sq. ft.

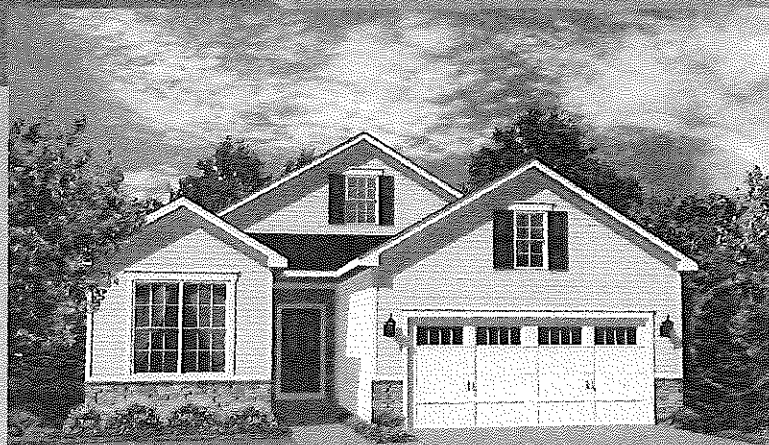


# Deerfield Collection



COTTAGE

RECEIVED  
Town of Colonie  
APR 25 2019  
Planning & Economic  
Development Department



NANTUCKET  
(SHOWN WITH STONE OPTION)

Nantucket • 1,510 sq. ft.  
Cottage • 1,510 sq. ft.

**bonus / flex space options**  
Plan extension option • 33 sq. ft.



# Saratoga Collection



COTTAGE



NANTUCKET

Cottage • 2,142  
Nantucket • 2,130 sq. ft.



# Ravello Collection



**Nantucket**



**Farmhouse**

**New England**

*Farmhouse shown with extended porch option*

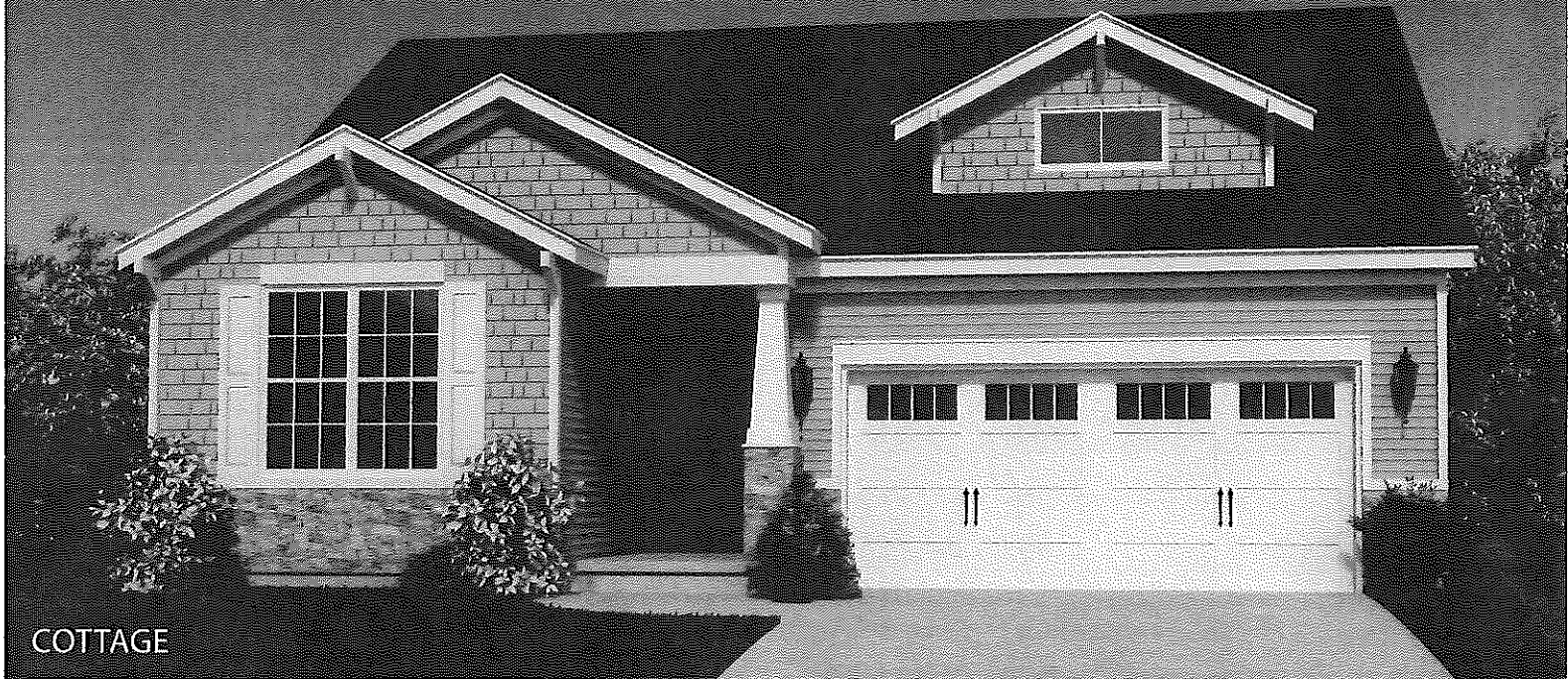
Nantucket • 2,304 sq. ft.  
Farmhouse • 2,311 sq. ft.  
New England • 2,310 sq. ft.

**bonus / flex space options**

Sunroom adds 294 sq. ft.  
BR #5 adds 294 sq. ft.



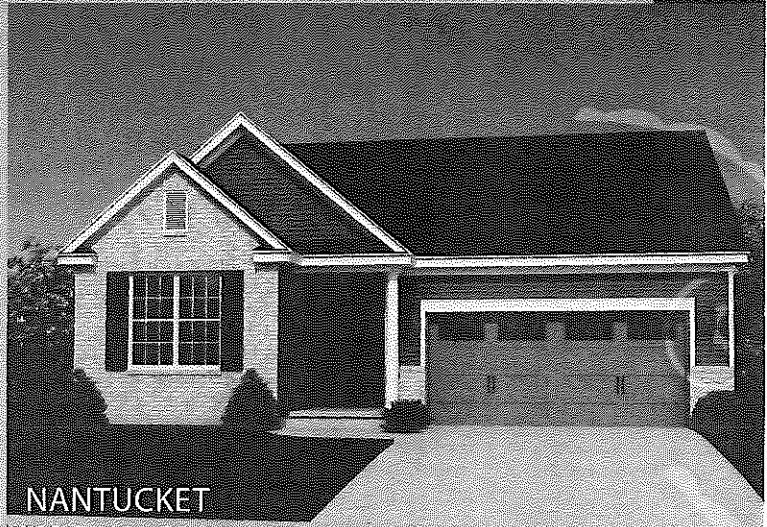
# Garrison Collection



COTTAGE



CRAFTSMAN



NANTUCKET

Cottage • 2,373 sq. ft.  
Craftsman • 2,373 sq. ft.  
Nantucket • 2,373 sq. ft.

**bonus / flex space options**  
covered porch • 250 sq. ft.



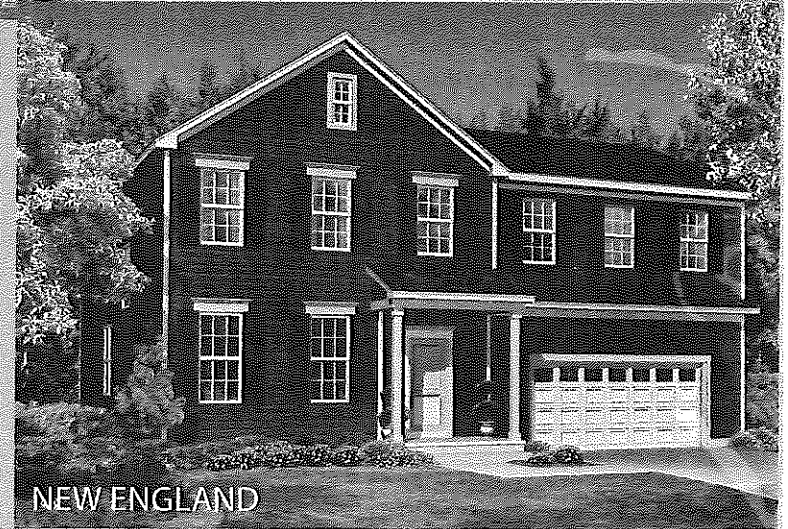
# Ravello II Collection



NANTUCKET



FARMHOUSE



NEW ENGLAND

- OPTIONAL PARTIAL STONE FRONT SHOWN
  - WRAP-AROUND PORCH OPTION SHOWN
  - OVERHEAD DOOR GLASS OPTIONAL IN SOME COMMUNITIES
- Nantucket • 2,542 sq. ft.  
 Farmhouse • 2,557 sq. ft.  
 New-England • 2,548 sq. ft.

## bonus / flex space options

- sun room • 336 sq. ft.
- screen porch • 336 sq. ft.
- bedroom 5 • 336 sq. ft.
- mudroom • 88 sq. ft.



# TRILOGY COLLECTION



3A



3B

## base square footage

3A • 3,156 sq. ft.

3B • 3,141 sq. ft.

3C • 3,153 sq. ft.

3D • 3,130 sq. ft.

## options square footage

EVO Suite Option (3A) • +57 sq. ft.

EVO Suite Option (3B) • +59 sq. ft.

EVO Suite Option (3C) • +59 sq. ft.

Optional Loft or BR#5 (Plan 3A) • 275 sq. ft.

Optional Loft or BR#5 (Plan 3B) • 268 sq. ft.

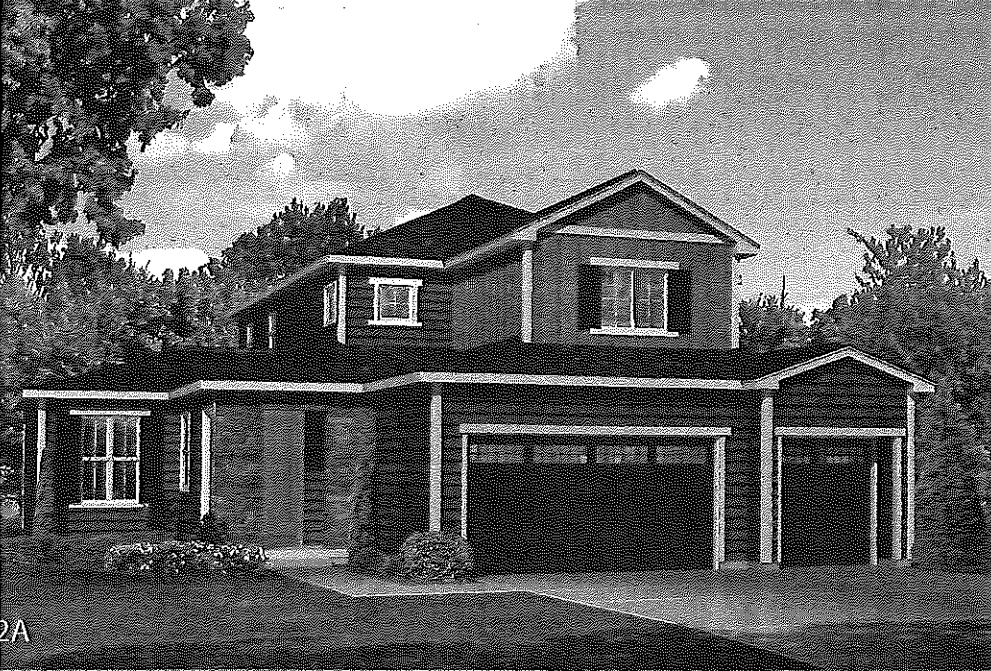
Optional Loft or BR#5 (Plan 3C) • 286 sq. ft.

Optional Larger Laundry Room & W.I.C • 141 sq. ft.





# TRILOGY COLLECTION



2A



2B

## base square footage

2A • 2,786 sq. ft.  
2B • 2,786 sq. ft.  
2C • 2,786 sq. ft.

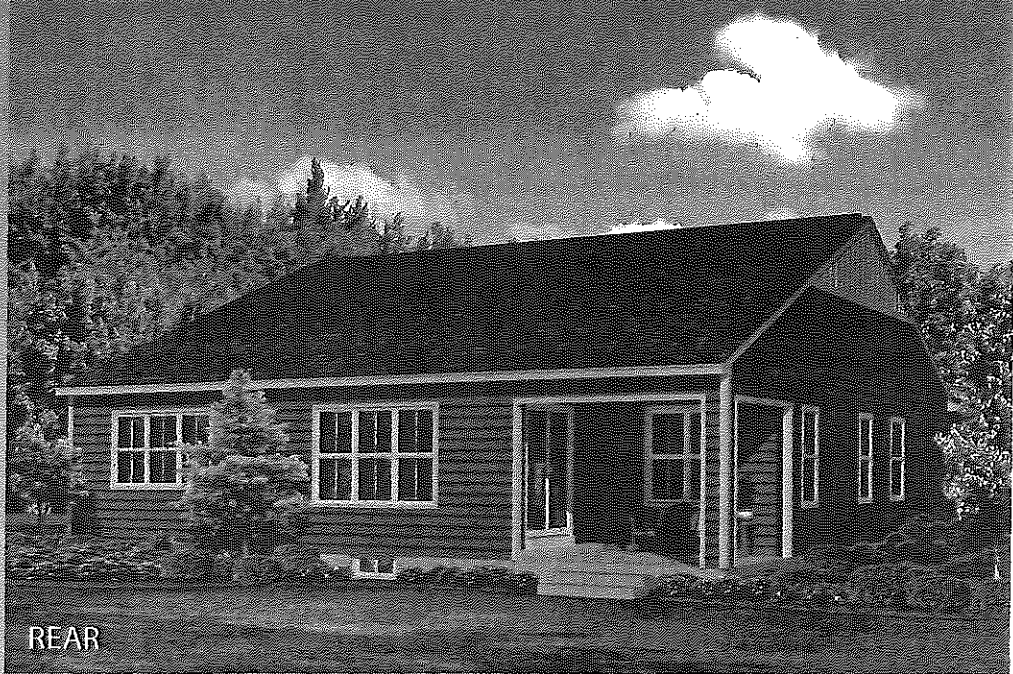
## options square footage

EVO Suite Option (All Elevations) • 172 sq. ft.  
Sunroom Option • 214 sq. ft.  
Optional Loft or BR#5 (Plan 2A) • 197 sq. ft.  
Optional Loft or BR#5 (Plan 2B) • 240 sq. ft.  
Optional Loft or BR#5 (Plan 2C) • 203 sq. ft.  
Optional Outdoor Living (behind great room) • 214 sq. ft.





ID



REAR



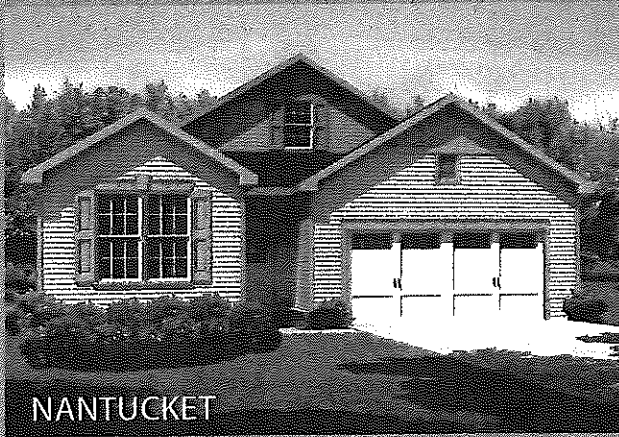
**MARINI HOMES, LLC**  
624 New Loudon Road  
Latham, NY 12110  
phone • 513.869.1200  
fax • 513.869.4200  
[www.marini.com](http://www.marini.com)



The Capital Region's trusted homebuilder since 1947.



HUDSON VALLEY



NANTUCKET



MARINI HOMES, LLC

624 New Loudon Road

Latham, NY 12110

phone • 518.869.1200

fax • 518.869.4200

[www.marini.com](http://www.marini.com)

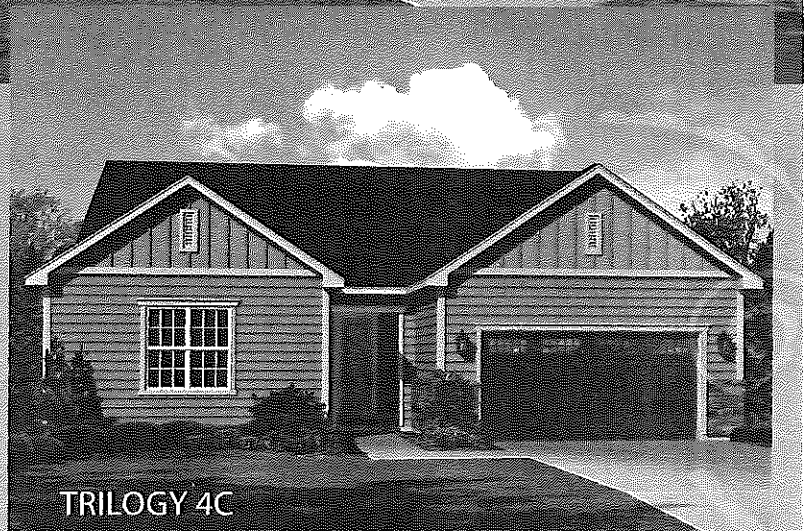
# Trilogy 4 Collection



TRILOGY 4A



TRILOGY 4B



TRILOGY 4C

Trilogy 4 • 2,191 sq. ft.  
Luxury master bath option + 154 sq. ft.  
Add study vs tandem garage + 199 sq. ft.



# Trilogy 5 Collection



TRILOGY 5A



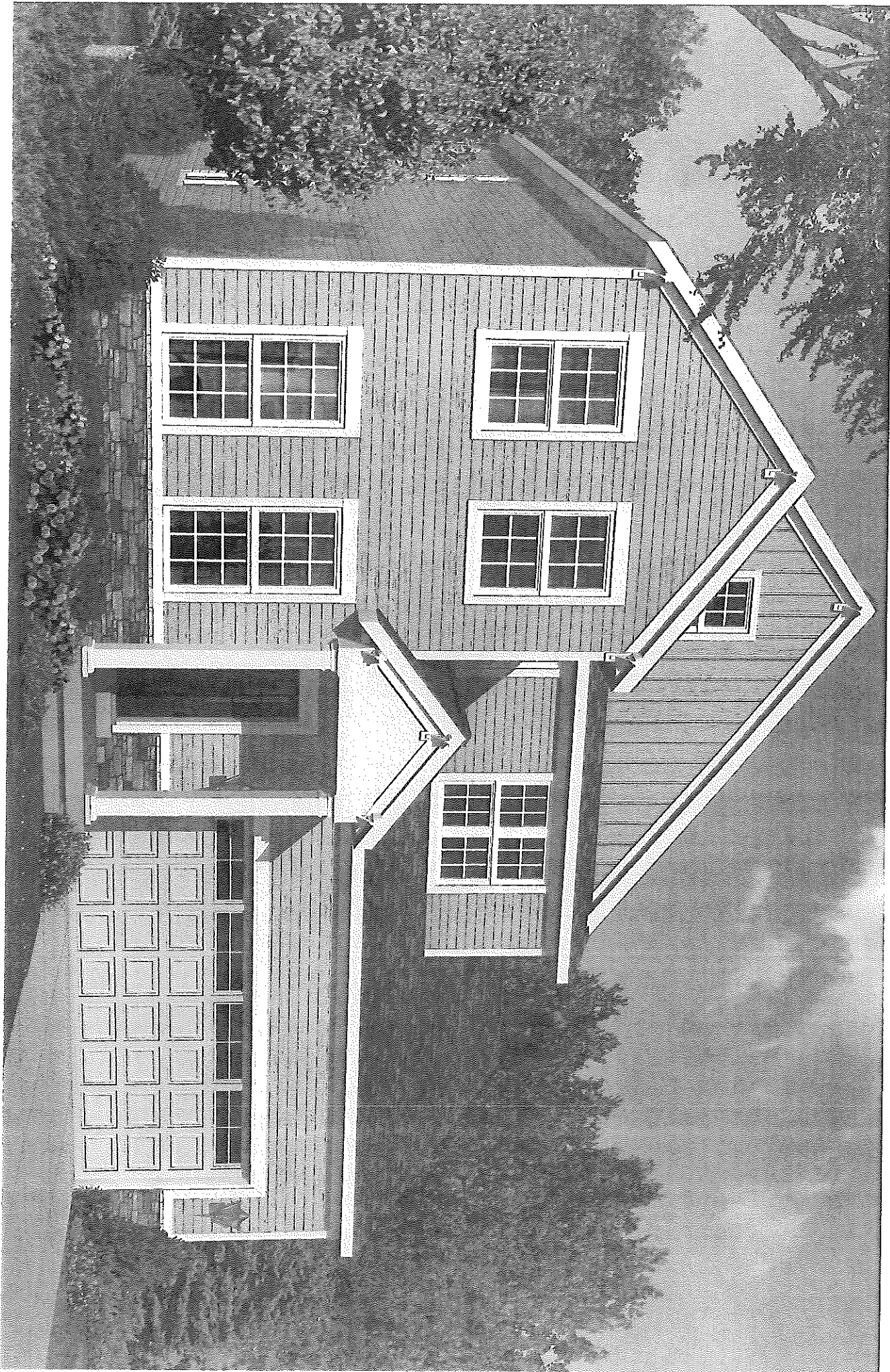
TRILOGY 5B



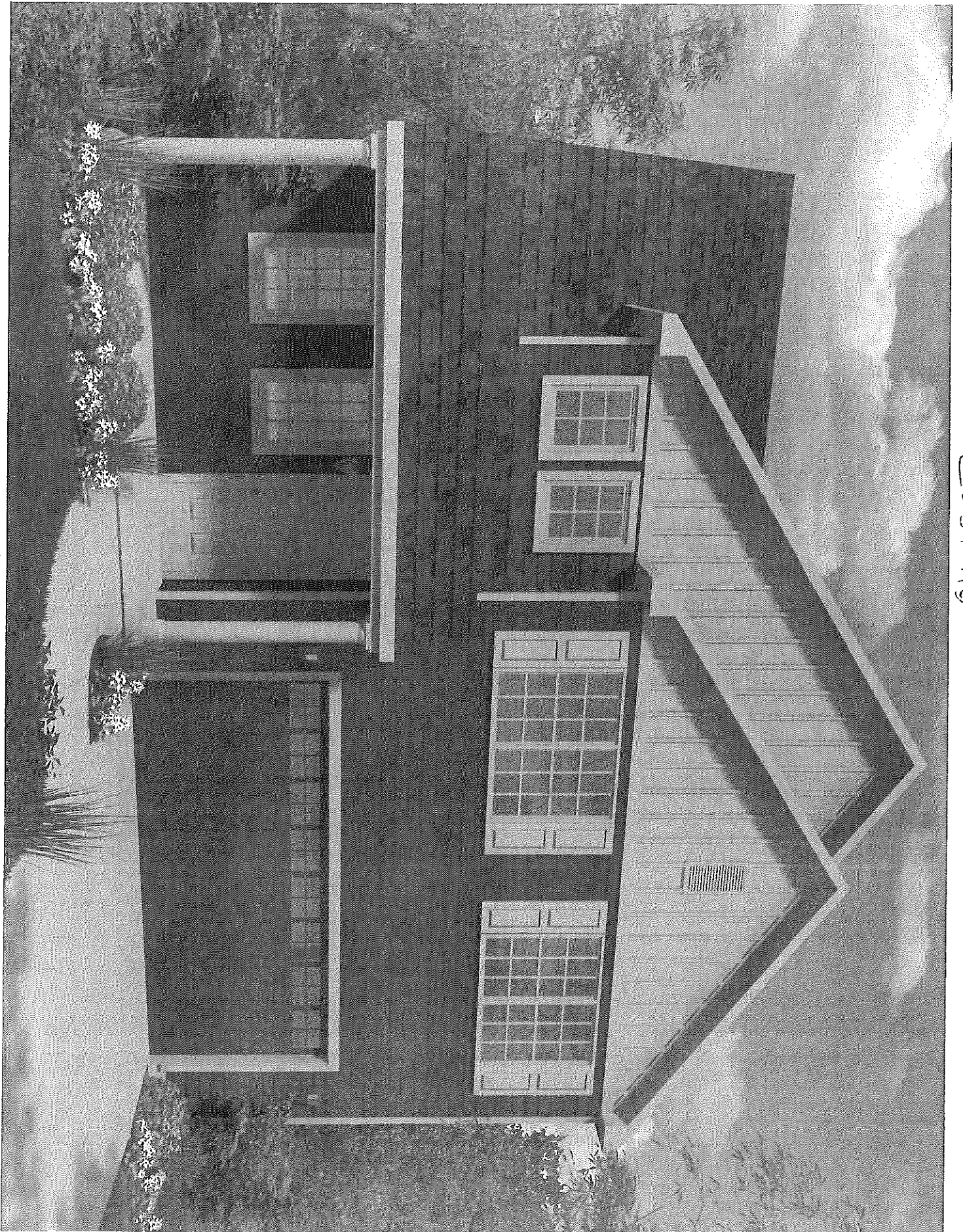
TRILOGY 5C

Trilogy 5A • 2,266 sq. ft.  
Trilogy 5B • 2,230 sq. ft.  
Trilogy 5C • 2,234 sq. ft.





*Hammor*



Case 119